



Historic Water Tower Neighborhood

Cambridge Substation Retirement

Agenda

- Project overview/Scope
 - Map
- Phase 4
 - Overview
 - Map
 - Construction plan
 - Customer contact
- Examples and what to expect
- Questions and discussion

Project Overview

- Retire vintage substation – 1956
 - Betterment of service initiative
 - Infrastructure dating back to 1930's
 - Address reliability of 5.5 miles of overhead 4kv facilities
- New 13.2kv feed to handle customer load
 - Shorewood substation
- Four total phases
 - 1 – extend cable from Shorewood substation
 - 2, 3 and 4 – rebuild/convert facilities

Project boundaries – Phases 2, 3 & 4



Project boundaries – Phase 4



Phase 4

- Rebuild 1.7 miles of overhead and 1.3 miles of cable in conduit; convert to 13.2 kV
 - North Avenue to Newberry Boulevard; Maryland Avenue to Wahl Avenue
- New poles, transformers and distribution lines
 - Some new poles increase in height in order to provide safe working clearances
- Corridors
 - East/West – Park Place and Belleview Place
 - North/South – Private Property and/or alley

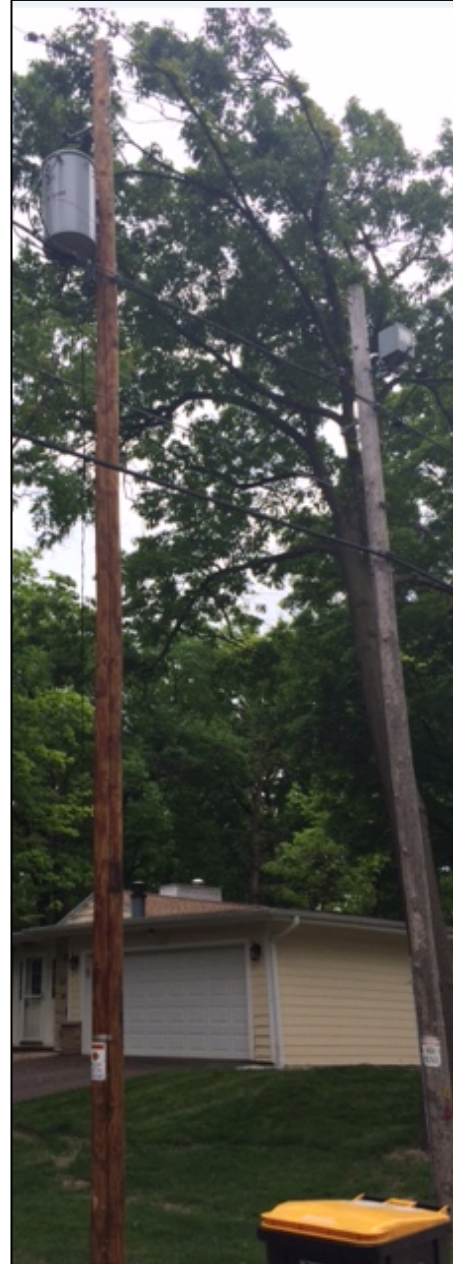
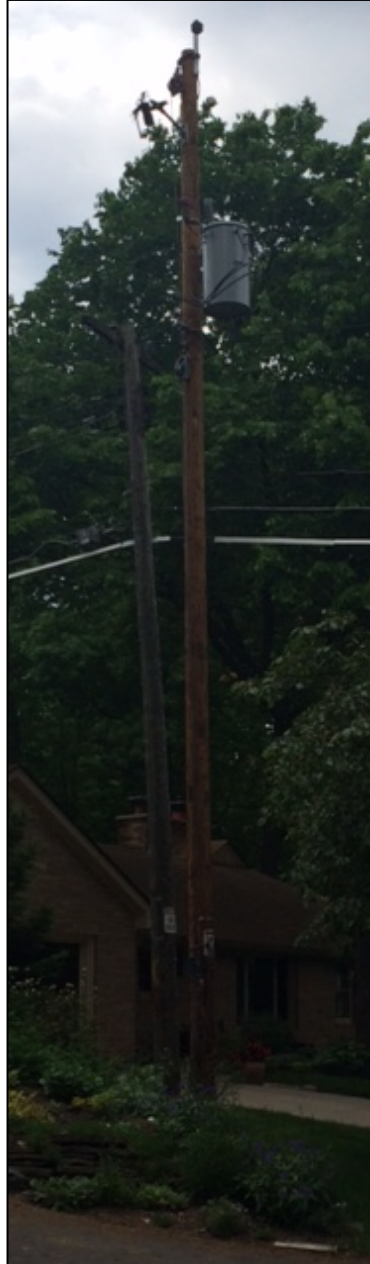
Phase 4 construction

- 148 poles
 - 79 poles remain at their current height
 - 40 replaced
 - 63 poles replaced and increase in size
 - 75% increase 5ft
 - 4 poles replaced and reduced in height
 - 2 poles eliminated
 - 2415 N. Terrace Ave
 - 2549 N. Lake Dr

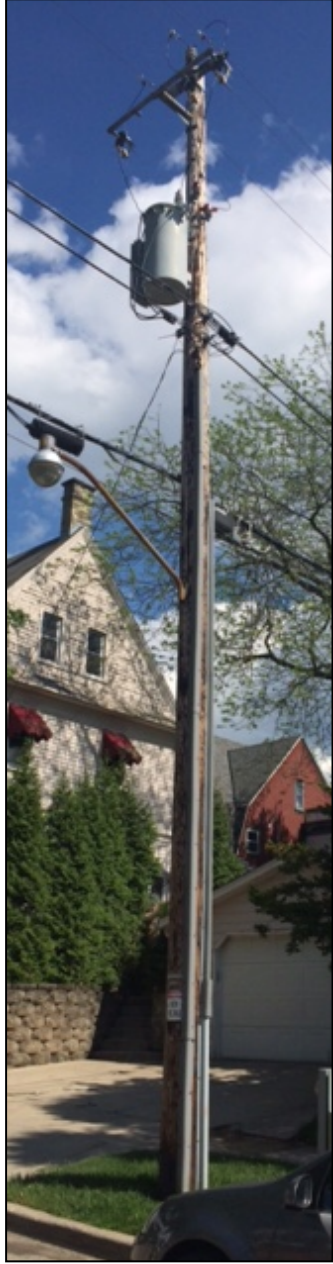
Customer contact

- May/June
 - Introductory letter
- June/July
 - Personal contact
- August/September
 - Construction start notice and project brochure
- Customers impacted by a service disruption
 - A letter about one week prior to the scheduled outage date and a reminder call

During Construction Transition to New Poles



Current



Future



Alley transition (note cut-off poles for joint-use transfers)

Current



Future



Current



Future



Questions and Discussion

